

THINGS TO DO THIS FESTIVE SEASON

1. Skate Park

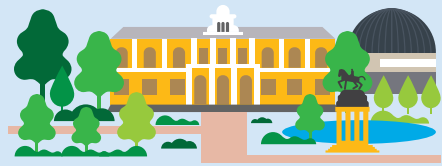
The central city's award-winning skate park is under a bridge in Mill Street, next door to the Gardens MyCiTi station.

Transfer to route: **101** or **103**
Get off at: Gardens station

2. Labia Theatre

The independent movie theatre is situated in Orange Street. It was opened in 1949 and originally only hosted performing arts but in later years the Labia added screens and became a cinema. One of the best things about it is that you can enjoy a meal while watching your movie.

Transfer to route: **101**
Get off at: Government Avenue



3. Planetarium

Following a recent upgrade, the Planetarium with its multi-sensory digital dome offers a world-class experience of the night skies and a whole lot more.

Transfer to route: **101**
Get off at: Michaelis or Upper Long

4. Iziko South African Museum

For over 200 years, scientists at the South African Museum have been adding to the collection of almost two million items. For a very affordable price, go check out specimens ranging from over 700 million years old to a few days old.

Transfer to route: **101**
Get off at: Michaelis

5. The Company's Garden

Stroll under the Arch for Arch into this historic green oasis in the city centre, feed the squirrels, browse the festive season market and enjoy a picnic on the lawns or lunch at the restaurant.

Transfer to route: **107**
Get off at: Groote Kerk

6. District Six Museum

The densely populated District Six suburb near the city centre was the site of forced removals during the time of the infamous apartheid-era Group Areas Act. The museum tells the story and houses memorabilia and artefacts from former residents.

Transfer to route: **103**
Get off at: Lower Buitenkant

7. The Castle of Good Hope

South Africa's oldest colonial building, built in 1659 as a fort, was previously on the edge of the city's shoreline. Today the Castle houses a military museum, William Fehr's collection of paintings and is home to the Cape Town Highlanders Regiment.

Transfer to route: **102** or **261**
Get off at: The Castle or Castle

8. The Slave Lodge and Church Square

Cape Town in the 1700s was home to many slaves. The Iziko Slave Lodge, which used to house slaves, has an exhibition called "human wrongs to human rights". On historic Church Square nearby there's a memorial to slavery and a plaque marking the tree under which slaves were auctioned.

Transfer to route: **107**
Get off at: Groote Kerk

9. St George's Cathedral

Visit the Anglican Cathedral, and don't miss the Crypt with its exhibition recalling the peace marches that preceded the release of former President Nelson Mandela. There's a piece of the historic Berlin Wall across the way in St George's Mall.

Transfer to route: **107**
Get off at: Groote Kerk

10. Greenmarket Square

This outdoor market is a treasure trove of clothings and curios, surrounded by street cafés and restaurants. Also visit the Pan African Market on Long Street for décor items and souvenirs with an authentic African flavour, including wooden figurines, beaded items and colourful artworks. Check out the nearby Church Street art galleries and stalls.

Transfer to route: **101**
Get off at: Longmarket

11. Long Street

If the night life is what you're after, Long Street offers a variety of restaurants ranging from Kurdish, Chinese, Mozambican and Indian, clubs and bars to choose from. There are some great eating places in nearby Loop and Bree streets too.

Transfer to route: **101**
Get off at: Lower Long or Upper Long

12. The Bo-Kaap

Explore this historic district, with its colourful homes, cobbled streets, spice shops and mosques.

Transfer to route: **101**
Get off at: Church



13. Festive Lights

Adderley Street's festive season lights draw crowds in the evenings. The official switch-on and music festival is on 3 December, and the lights stay on until the new year.

Transfer to route: **107**
Get off at: Adderley station or Groote Kerk

14. Artscape Theatre Centre

The main performing arts centre in Cape Town, Artscape is the home of ballet, opera and plays of every genre. Visit the website for what's on.

Transfer to route: **101**
Get off at: Civic Centre station

15. Two Oceans Aquarium

Visit the new predator exhibit and see the ragged-tooth sharks, part of a research programme, and all the other sea creatures. Fun for the whole family.

Transfer to route: **104**
Get off at: Aquarium

16. The V&A Waterfront

Join the fun at this shopping and leisure destination. Meet Santa, ride the Cape Wheel, and enjoy light shows on 10 and 11 December at 20:00. Shops are open until 22:00 from 10 to 24 December. Party the night away on New Year's Eve.

Transfer to route: **T01** or **104**
Get off at: Nobel Square or Waterfront station



17. Mouille Point and Green Point Park

In this area between the V&A Waterfront and Sea Point, there's a beachfront zone of family-friendly activities and one of the city's best-loved parks.

Transfer to route: **T01** or **104**
Get off at: Stadium or Lighthouse

18. Sea Point Promenade

Stroll along the Atlantic Ocean seafont with the runners, dog walkers and cyclists. Grab an ice-cream or a bite to eat near the Pavilion or take a dip in the famous public pool.

Transfer to route: **104**
Get off at: Three Anchor Bay to Queens Beach

19. Clifton beaches

While away a sunshine day and plunge into the bracing water at Clifton's famous beaches. Perfect for picnics but remember no alcohol allowed.

Transfer to route: **108** or **109**
Get off at: Clifton 1st – 4th

20. Camps Bay

Hop off the bus in the playground of Camps Bay for the beach, the tidal pool, the mountain views, the restaurants and trendy bars for sundowners.

Transfer to route: **107** , **108** or **109**
Get off at: Camps Bay or Whale Rock

21. Bay Harbour Market

This popular market in the Hout Bay harbour has food, gifts and music, plus it's near the beach.

Transfer to route: **108**
Get off at: Atlantic Skipper

22. Lion's Head

At 750m above sea level, Lion's Head and Signal Hill are ideal for a day-time hike or, if you're a bit more adventurous, a hop-off spot for paragliding, hang-gliding or microlighting. The walk up the head itself requires a moderate level of fitness, and the unpredictable weather means you always need a light jacket and water. Experience breathtaking views of Table Mountain, the city and the Atlantic coastline.

Transfer to route: **107**
Get off at: Kloof Nek

23. Table Mountain Aerial Cableway

This popular attraction takes you in a cable car to the summit of Table Mountain. You can also walk or cycle along Tafelberg Road, or take a hike up Skeleton Gorge, to take advantage of vistas of the city and sea.

Transfer to route: **110**
Get off at: Upper Tafelberg

24. Deer Park

Situated in Vredehoek on the slopes of the mountain, the nature reserve provides a perfect getaway from the hustle and bustle of the city. Go for a relaxing stroll, picnic or cycle. There's a children's play park, great views and coffee shops.

Transfer to route: **101**
Get off at: Herzlia

25. The Woodstock Foundry

This is where you will find a working industrial art foundry, licensed restaurant, coffee roaster and café, a botanical florist, high-end designer furniture, arty décor for home and office, designer jewellery for every occasion and fabrics – even a natural history store. The Foundry also hosts Open Studio Nights.

Transfer to route: **261**
Get off at: Lower Church

26. Old Biscuit Mill

Great design and scrumptious food is to be found at the Old Biscuit Mill. Don't miss the Neighbourgoods Market on Saturdays.

Transfer to route: **261**
Get off at: Biscuit Mill

27. Lookout Hill

Khayelitsha is one of Cape Town's biggest townships. Take in the view from the top of Lookout Hill, stop by a restaurant and feast on the local cuisine and shop for handmade crafts at stalls in the area.

Transfer to route: **D01** or **D02**
Get off at: Kuyasa

28. Killarney Race Track

For an adrenaline rush, head over to the city's premier motor-racing track.

Transfer to route: **T01** or **T04**
Get off at: Killarney station

29. Trampoline Park

Release some pent-up energy at Jump Around indoor trampoline park. You can also choose to play soccer, dodgeball or basketball.

Transfer to route: **T01**
Get off at: Zoarvlei station

30. Milnerton Water Park

The perfect family venue with braai facilities, a swimming pool, water slides, mini-golf and chess.

Transfer to route: **T01**
Get off at: Table View station



31. Canal Walk, Ratanga Junction and Intaka Island

The Canal Walk mega-mall in Century City is a popular shopping and leisure destination. The Ratanga Junction theme park and Intaka Island bird sanctuary, with canoe hire and stand-up paddling, are also popular nearby attractions.

Transfer to route: **251**
Get off at: Central Park or Century City station

32. Lagoon Beach

The beach and sheltered lagoon area is perfect for family fun. There are restaurants nearby when hunger strikes.

Transfer to route: **T01**
Get off at: Lagoon Beach

33. Milnerton Flea Market

Originally located in Milnerton, this quirky flea market is now in Marine Drive, Paarden Eiland. If you're after a bargain there is lots on offer and the market is child and animal friendly.

Transfer to route: **T01**
Get off at: Zoarvlei station



34. Rietvlei Wetlands

With walking trails, birdwatching, braai spots and picnic areas, the Rietvlei Wetlands is a great place to experience nature. The lake is used for windsurfing and sailing.

Transfer to route: **T01**
Get off at: Grey station

35. Melkbosstrand

This coastal village has lots to offer visitors, from kayaking, swimming, kitesurfing, fishing and windsurfing – with spectacular views, seaside restaurants and even a paintball field.

Transfer to route: **230**
Get off at: Melkbosstrand

36. Bloubergstrand and Big Bay

The beachfront stretch along Marine Drive offers space for a brisk walk or cycle, great beaches and postcard views across the bay to the city, Table Mountain and Robben Island. There's kitesurfing too. A bit to the north is Big Bay, one of Cape Town's foremost surfing spots with a sheltered beach.

Transfer to route: **217**
Get off at: Marine to Seal, or Big Bay



MyCiTi Station Art
The City of Cape Town has installed artwork at 40 of its 42 stations with the aim of connecting commuters to their surroundings. This is in line with similar projects commissioned by public transport systems around the world such as New York, London, Moscow and Sao Paulo. Work was completed by local artists working in different mediums as diverse as mosaic, drawing, photography and sculpture. See the MyCiTi art icon for stations that include artwork.

Take a Bike
Take advantage of Cape Town's 435 km of cycle paths. Cycle up MyCiTi's longest cycle path of about 20 km between the city centre and Table View while enjoying the scenery en route. You can also stop off to have a bite to eat at any of the restaurants along the West Coast. Other routes to enjoy are between Camps Bay and Hout Bay as well as Salt River to the southern suburbs. If a shorter distance is what you're looking for, cycle along the Sea Point Promenade and enjoy the view of the sea. Catch the bus at one of the MyCiTi stations closest to your cycle path if you're not in the mood to cycle back. Your wheels are welcome aboard!

Tourism information
MyCiTi station art

YOUR GUIDE TO MYCITI

MyCiTi is Cape Town's safe, reliable, convenient bus system. Buses operate up to 18 hours a day. You need a **myconnect** card, but the system is easy to use once you know how.

1

Get your myconnect card

Everyone needs their own **myconnect** card to travel. Buy yours for R35 from MyCiTi station kiosks and some shops.

Remember your PIN

Your card comes with a PIN number, which you will need to load money on your card.

2

Load money on your card for travel

Load any amount as Standard, or save with Mover and discounted travel packages.

	REGULAR USE			OCCASIONAL USE	
	Standard	Mover	Monthly Pass	Off-Peak Travel (OPT)*	Day Pass*
IDEAL FOR					
LOAD	Fares and making small purchases	Cost-effective, regular travel (save 30%)	Cost-effective, regular travel over long distances	Exploring the city on weekends and public holidays	Exploring at any time, on any day
VALID FOR					
FARES	Any amount (load fees apply)	Mover packages (R35, R50, R60, R80, R100, R150, R200, R300, R400, R600, R1000)	Monthly Pass (R780)	OPT1 (R39) OPT3 (R110) OPT7 (R206)	One-day (R94) Three-day (R234) Seven-day (R514)
GET IT AT	3 years	3 years	1 month from a date of your choice	1, 3 or 7 consecutive calendar days	1, 3 or 7 consecutive calendar days
FARES	Standard fares apply	Mover fares apply (save 30%)	Unlimited travel anywhere, at any time	Unlimited travel (except Airport) during the off-peak*	Unlimited travel (except Airport) at any time*
GET IT AT	Station kiosks, retailers, Absa cash-accepting ATMs	Station kiosks, retailers, Absa cash-accepting ATMs	Station kiosks	Station kiosks	Station kiosks

*For prices of these packages including travel to and from the Airport, see www.myciti.org.za

3

Tap in and Tap out

Start your trip

Tap in by holding your card against the validator as you enter a station or board a bus at a stop.

End your trip

Tap out by holding your card against the validator as you leave a station or exit a bus at a stop.

4

Fares – how much will my journey cost?

You pay for the distance you travel, which is calculated from where you tap in to where you tap out.

Are you a MyCiTi Mover?	YES	Are you starting your trip in the Peak fare period (weekdays 06:45 - 08:00 or 16:15 - 17:30) or in the Saver fare period (all other times, including weekends and public holidays)?	MyCiTi Mover fares									
			Peak	0-5 km	5-10 km	10-20 km	20-30 km	30-40 km	40-50 km	50-60 km	>60 km	
	NO			Saver	R9.80	R12.40	R16.50	R18.20	R19.80	R22.70	R25.40	R27.70
				Peak	0-5 km	5-10 km	10-20 km	20-30 km	30-40 km	40-50 km	50-60 km	>60 km
			Saver	R6.40	R8.30	R10.40	R12.20	R13.50	R15.90	R18.00	R19.70	
			MyCiTi Standard fares									
			Peak	0-5 km	5-10 km	10-20 km	20-30 km	30-40 km	40-50 km	50-60 km	>60 km	
			Saver	R13.90	R17.50	R23.50	R25.80	R28.10	R32.20	R36.10	R39.40	
			Peak	0-5 km	5-10 km	10-20 km	20-30 km	30-40 km	40-50 km	50-60 km	>60 km	
			Saver	R9.10	R11.70	R14.80	R17.40	R19.20	R22.60	R25.50	R27.90	

For journeys linking with the Airport station, add R73 (Standard) or R52.10 (Mover).

Plan your journey and save

You pay more in the Peak fare period (weekdays 06:45-08:00 and 16:15-17:30), and less at all other times including weekends and public holidays (the Saver fare period). You are charged Peak or Saver fares depending on when you start your trip.

Changing buses

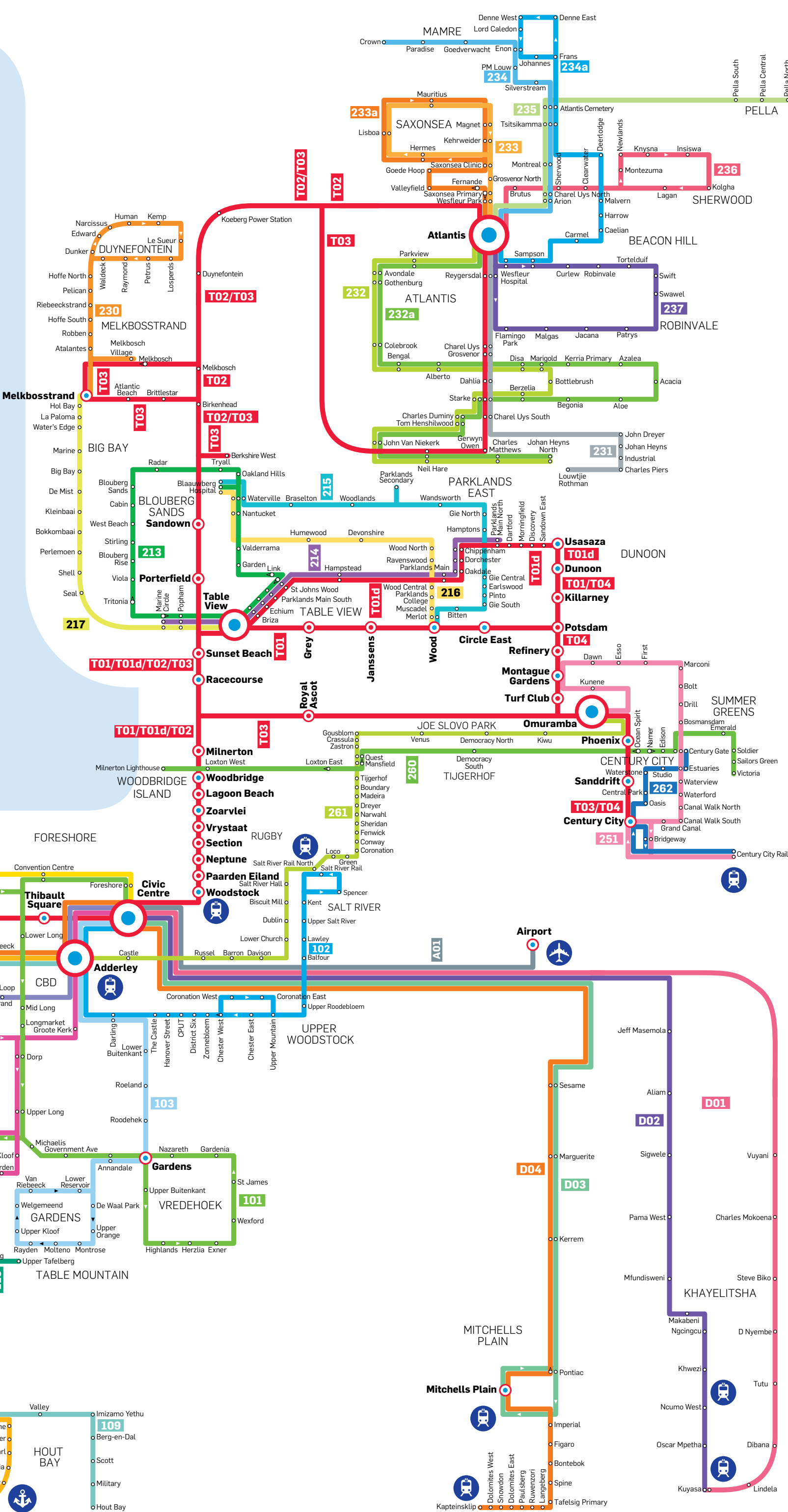
Change from one route to another, and only pay one fare. Tap out at a station or on a bus and tap in again within 45 minutes to continue your journey. To change buses inside a station, make your way from one bus to another without tapping.

MyCiTi routes

- T01** Dunoon - Table View - Civic Centre - Waterfront
- T01d** Dunoon - Parklands - Civic Centre
- T02** Atlantis - Table View - Civic Centre
- T03** Atlantis - Melkbosstrand - Table View - Century City
- T04** Dunoon - Century City
- A01** Airport - Civic Centre
- 101** Vredehoek - Gardens - Civic Centre
- 102** Salt River Rail - Walmer Estate - Civic Centre
- 103** Oranjezicht - Gardens - Civic Centre
- 104** Sea Point - Waterfront - Civic Centre
- 105** Sea Point - Fresnaye - Civic Centre
- 106** Camps Bay (clockwise)
- 107** Civic Centre - Camps Bay (anti-clockwise)
- 108** Hangberg - Sea Point - Adderley
- 109** Hout Bay - Imizamo Yethu - Sea Point - Adderley
- 110** Table Mountain
- 114** Sea Point - Civic Centre
- 213** West Beach - Table View - Sunningdale
- 214** Marine Circle - Table View - Parklands
- 215** Sunningdale - Gie Road - Wood
- 216** Sunningdale - Wood Drive - Wood
- 217** Melkbosstrand - Big Bay - Table View
- 230** Duynfontein - Melkbosstrand
- 231** Atlantis - Atlantis Industria East
- 232** Atlantis - Avondale - Protea Park - Atlantis Industria West
- 232a** Atlantis - Avondale - Protea Park - Atlantis Industria West
- 233** Atlantis - Saxonsea
- 233a** Atlantis - Saxonsea
- 234** Atlantis - Mamre
- 234a** Atlantis - Mamre
- 235** Atlantis - Pella
- 236** Atlantis - Sherwood
- 237** Atlantis - Robinvale
- 251** Century City - Montague Gardens
- 260** Summer Greens - Woodbridge Island
- 261** Omuramba - Salt River - Adderley
- 262** Century Gate - Century City Rail
- D01** Khayelitsha East - Civic Centre
- D02** Khayelitsha West - Civic Centre
- D03** Mitchells Plain East - Civic Centre
- D04** Kapteinsklip - Civic Centre

- Station
- Station with myconnect services
- Stop
- Stop only accessible in direction indicated

Routes, stops and stop names are subject to change.



Call 0800 65 64 63 available 24/7 in English, Afrikaans and isiXhosa
Visit www.myciti.org.za

*Terms and conditions apply.